



AGLBIIC NEWS

Volume XXIX, Issue 1
Pre-Conference 2004
www.aglbic.org

A Letter from the President

By Colleen Connelly

I would like to take this opportunity to welcome in new AGLBIC officers, highlight the exciting events at our ACA 2004 Conference in Kansas City, update you on some AGLBIC issues, and note some special contributions of AGLBIC leaders. First let me begin with welcoming some special people.

The ACA election results arrived and I am so pleased to announce our new AGLBIC officers. Joy Whitman is AGLBIC's new President-elect beginning July 1, 2004; Ed Wierzalis begins as trustee on the same date.



Ed Wierzalis has served as co-editor of this AGLBIC Newsletter for the past three years and will begin his three-year trustee position July 1st. I so appreciate working with such fine people and seeing the extraordinary dedication to the mission of AGLBIC.

I also welcome Anneliese Singh as our new multicultural consultant. Anneliese will attend our board meeting this spring and present ideas on better serving the needs of our multicultural perspective and increasing the attractiveness of the division to people of diverse cultures. Thank you, Anneliese, for your enthusiasm in becoming AGLBIC's first multicultural consultant for the 2004-2005 year.

Joy Whitman is well known in AGLBIC circles already. She has served as AGLBIC trustee for the last three years. She also has been the Chair of the Graduate Student/Mentoring Program for as long as I have known her. Each year Joy has worked with the President-elect in planning and staffing the AGLBIC conference booth in addition to coordinating and facilitating mentoring relationships between AGLBIC members and graduate students. I have complete confidence in Joy and look forward to continuing our work together.

Next, I would like to let you know that the board has been busy preparing for the ACA 2004 Conference in Kansas City. (Please see the newsletter insert that contains the day, time, and meeting room information for all events!) To begin, the AGLBIC board

This membership meeting is also the time when we gather nominations for elected offices. We want all of you to find a way to participate in this vibrant organization, and choosing to become more involved at the leadership level is a fantastic way to do this. The following positions will be open for

K.R. Hartman
1110 Fairlane Drive
Valparaiso, IN 46383

A Glance at What's Inside...

AGLBIIC Day of Learning.....pg. 4
Educational Session Listings with summaries.....pg. 5
Free Publications to Fight Hate.....pg. 2



Continued from page 1...

nomination in Kansas City. Please come to the business meeting and nominate yourself or someone you know who wants to become more active in AGLBIC. If you cannot make the conference, then feel free to forward your nomination (yourself or another member) to me between now and then at the following: Ned Farley, Ph.D.
Chair, Mental Health Counseling Program Coordinator, Integrative Studies Program Center for Programs in Psychology
Antioch University Seattle
2326 Sixth Avenue
Seattle, WA 9812
206-268-4814

Nominations are needed for the following...

President-elect-elect

(serves from July, 2005 as president-elect through June, 2008 as past-president)

Trustee

(a three year term beginning July, 2005-June, 2008)

Secretary

(a two year term beginning July, 2005-June, 2007)

ACA Governing Council Representative

(a three year term beginning July, 2005-June, 2008).



FREE Table of Contents with Abstracts E-mail Service! Gay, Lesbian, Bisexual & Transgender Studies

JOURNAL OF GAY & LESBIAN ISSUES IN EDUCATION™

an international quarterly devoted to research theory & practice

This journal puts cutting-edge research studies, articles from frontline practitioners, and scholarly essays into your hands

Volume 1, No. 1—Fall 2003.
Quarterly (4 issues per volume).

HARRINGTON LESBIAN FICTION QUARTERLY™

Volume 3, No. 1—Spring 2002.
Quarterly (4 issues per volume).

JOURNAL OF BISEXUALITY™

Volume 3, No. 1—Spring 2002.
Quarterly (4 issues per volume).

HARRINGTON GAY MEN'S FICTION QUARTERLY™

Volume 4, No. 1—Spring 2002.
Quarterly (4 issues per volume).

Free Table of Contents with Abstracts E-mail Service! Sign up for our new FREE table-of-contents with abstracts e-mail service! Just send your e-mail address and the journal title to content@harringtonpressinc.com and you'll start to receive article titles in advance of publication.

To request a copy of the Gay, Lesbian, Bisexual & Transgender Studies Catalog visit our Web site at www.harringtonpress.com.

The Haworth Press, Inc.
10 Alice Street, Binghamton, NY 13904-1590 • USA
Tel: 1-900-HAWORTH (1 800 420 6794) / Fax: 1 800 806 0592
Outside US/Canada Tel: 1 607 722 8957 / Fax: 1 607 771 1001
E-mail: order@harringtonpressinc.com • Web: www.harringtonpress.com

JOURNAL OF GAY & LESBIAN PSYCHOTHERAPY™

Adapted as the Official

Journal of the Association of Gay & Lesbian Psychiatrists
Volume 6, No. 1—Spring 2002.
Quarterly (4 issues per volume).

JOURNAL OF GAY & LESBIAN SOCIAL SERVICES™

... Aspects in Practice Policy & Research
Volume 14, No. 1—Spring 2002.
Quarterly (4 issues per volume).

JOURNAL OF HOMOSEXUALITY™

Volume 43, Nos. 1/2—Spring 2002.
(4 issues per vol. / 2 vols per year).

JOURNAL OF LESBIAN STUDIES™

Volume 6, No. 1—Spring 2002.
Quarterly (4 issues per volume).

AGLBIC MEMBERS ONLY ONLINE ACCESS

Go to the AGLBIC website

<http://aglbic.org>

click "members only"

Enter Login: &

Password

FREE!

Teaching Tolerance has several publications that are available for free to counselors, schools and students. Two of their publications focus on issues of Hate for K-12 schools and post-secondary campuses.

Responding to Hate at School: A Guide for Teachers, Counselors and Administrators

10 Ways to Fight Hate on Campus: A Response Guide for College Activists

For more information please go to their web site:

<http://www.tolerance.org>

AGLBIC's Mentoring Program

Objectives of the Mentoring Program for the Association for Gay, Lesbian, and Bisexual Issues in Counseling:

- To promote an understanding of gay, lesbian, and bisexual (GLB) issues in counseling through mentoring relationships between experienced AGLBIC members and others interested in serving GLB populations, especially graduate students, counseling interns, and novice professionals.
- To provide opportunities for career development and leadership within a national professional counseling organization.
- To provide opportunities for networking, exchange of ideas, and dialogue between and among members of mentoring relationships.
- To encourage and facilitate attendance and participation in professional development activities, especially the ACA World conference and/or other counseling national, regional, and local conferences.
- To encourage and foster supportive professional relationships between GLB professionals and allies.

I put my hand in yours and together we can do what we could never do alone. No longer is there a sense of helplessness, no longer must we each depend upon our own unsteady will power. We are together now, reaching out our hands for power and strength greater than ours, and as we join hands, we find love and understanding beyond our wildest dreams.

-Anonymous

For more information please contact:

JOY WHITMAN

jwhitman@depaul.edu

CONFIDENTIALITY RESPECTED

AGLBIC News Publication Dates and Guidelines

AGLBIC News, the newsletter of the Association of Gay, Lesbian, and Bisexual Issues in Counseling, is published three times annually. The AGLBIC News is published on-line in the summer and fall. Our Pre-conference issue is a mailed hardcopy. The publication dates and submission deadlines are:

Fall On-line edition: **November 1st**;
Submission Deadline: **September 15th**

Pre-conference hardcopy edition: **March 1st**;
Submission Deadline: **January 15th**

Summer On-line edition: **July 1st**;
Submission Deadline: **May 15th**

Submission Guidelines

Submit articles and items of interest to our readership and members that are current and informative. Submissions that encourage dialogue and opinion are especially encouraged.

All text submissions can arrive either by email [formatted in MS Word or embedded in an email] to the editors. Please note that the Editors have the right to edit your submission due to space considerations and/or content issues.

Please send your submissions to:

Karen Hartman, M.S. Ed
School of Education
Purdue University Calumet
2200 169th Street,
Hammond, IN 46322
hartman@calumet.purdue.edu (work)
raed8@comcast.net (home)

Edward A. Wierzalis, Ph.D.
University of North Carolina at Charlotte
Colvard 5063
9281 University City Blvd.
Charlotte, NC 28223-0001
ewierzera@email.uncc.edu

Disclaimer

Although the AGLBIC News attempts to publish articles and items of interest that are consistent with the mission and goals of AGLBIC, they do not necessarily reflect the overarching opinions, policies, or priorities of AGLBIC or ACA.

AGLBIC Leadership 2003-2004

Colleen Connolly, Ph.D., President
Assistant Professor
Educational Administration & Psychological Services
Texas State University-San Marcos
601 University Drive
San Marcos, Texas 78666
Work: 512-245-8677
Fax: (512) 245-8872
econnolly@txstate.edu

Ned Farley, Ph.D., Past-President/Elect
Chair, Mental Health Counseling Program
Center for Programs in Psychology
Antioch University Seattle
2326 Sixth Avenue
Seattle, WA 98121
206-268-4814
nfarley@antiochusa.edu

Gynda J. Boyd, Secretary
University of Illinois at Chicago
1200 W. Harrison St., Suite 2010
Chicago, IL 60607
(312) 996-3490
gyndj@uic.edu

Robert Mate, Treasurer
Office of the Dean of Students
Purdue University
West Lafayette, IN 47907-1096
765-494-5860
rmate@purdue.edu

Joy Whitman, Ph.D., Trustee 2001-2004
DePaul University
School of Education, Human Services and Counseling
2320 North Kenmore Ave.
SAC 375
Chicago, IL 60614-3298
jwhitman@depaul.edu

Melissa Liddertale, M.A., Trustee 2002-2005
3102 Sanger Hall
Harvard School of Public Health
677 Huntington Ave
SHDH-7th Floor
Boston, MA 02115
mlrecker@hsph.harvard.edu

Reginald Tucker, Trustee 2003-2006
Harvard School of Public Health
677 Huntington Ave
SHDH-7th Floor
Boston, MA 02115
recker@hsph.harvard.edu

Committee Chairs
Ned Farley, 2004 Conference Chair
Gynda Boyd, 2004 Conference Co-Chair
Joy Whitman, Graduate Student/Mentoring
Melissa Liddertale, Membership
Jeffrey Moseale, Membership Co-Chair
Ned Farley, Awards
Ned Farley, Nominations and Elections
Ned Farley, Bylaws
Rob Mate/Rhodes Gibson, Webmasters
Susan Seem, CACREP 2002-2005
Colleen Logan, Governing Council 2002-2005
Bob Koide, Historian and Archivist

Karen Hartman, M.S. Ed
Editor of the News
Purdue University Calumet
Initial Teacher Preparation
2200 169th Street
Hammond, IN 46323
hartman@calumet.purdue.edu (W)
raed8@comcast.net (H)

Ed Wierzalis, Ph.D.
Co-Editor of the News
UNC at Charlotte
Colvard 5031
9201 University City Blvd.
Charlotte, NC 28223-0001
ewierzera@email.uncc.edu

The Association for Gay, Lesbian and Bisexual Issues in Counseling is proud to present the first *AGLBI*C Day of Learning. This series of sessions offered during this day of learning is designed to enhance the counseling professional's knowledge, contextual awareness, and sociocultural understanding related to the unique needs of those who are GLBT and to their friends and "families."

AGLBI

Day of Learning

8:00-9:30am 90 min *AGLBI created*

Working with GLBT Clients: Advocacy in Action

Colleen Connolly, Colleen Logan, Melanie Harper, Bob Barret & Susan Seem

9:30-10:30am 60 min

Gay and Lesbian Individuals and Communities of Faith:

Finding Reconciliation

Ed Wierzalis

10:30-11:00 am 30 min

Counseling as a Critique of Gender:

On the Ethics and Practice of Counseling Transgendered Clients

Valerie Schweibert & Suzanne Goethals

11:00am-12:00noon 60 min

Career Counseling and Advocacy for

Lesbian, Gay, Bisexual, and Transgendered Persons

Barry Chung

12:00noon - 1:30pm Lunch

1:30-3:00pm 90 min

Body Image—A Special Concern for Gays and Lesbians

Cathy Woodyard, Texas Women's University

June Williams & Connie Jung Fox

3:00-3:30pm 30 min

Qualitative Exploration of the Empowerment Needs of Gay and Lesbian Parents

Kathryn Newtomm, Pamela Lassiter & Brian Dew

3:30-5:00pm 90 min *AGLBI created*

Multiculturalism and Diversity Within the GLBT Community

Colleen Connolly, Reginald Tucker, Barry Chung, Bob Barret & Roger Herring

Wednesday, March 31st

9:00am - 4:00pm

Board Mtg I

Westin: Van Horn B

Thursday, April 1st

11:00am - 3:00pm

Board Mtg II

Westin: Van Horn C

5:00pm - 5:30pm



State Chapter Focus

5:30pm - 7:00pm

AGLBI happy hour

Westin: Brasserie Bar

Friday, April 2nd

8:00am - 5:00pm

AGLBI Day of Learning

5:00pm - 5:30pm



Mentoring Focus

5:30pm - 7:30pm

AGLBI happy hour

Westin: Brasserie Bar

Saturday, April 3rd

10:30am - 12:00noon

AGLBI Brunch

Westin: Washington Park Place I

12:00noon - 1:00pm

AGLBI Business Mtg

Westin: Washington Park Place I

1:00pm - 2:00pm

AGLBI Graduate Student Mtg

Westin: Washington Park Place I

7:00pm - 9:30pm

AGLBI Reception

Hyatt Regency: Chicago C



From Our President continued...
meets on Wednesday and Thursday, March 31st and April 1st. We welcome anyone who would like to stop by our board meeting to do so.

We then have a full agenda at the conference for AGLBI members and those interested in GLBT issues in counseling. I reported that AGLBI will have its first *AGLBI Day of Learning* on Friday, April 2nd from 8:00 a.m. to 5:00 p.m. I think it will be an exciting day filled with relevant and inspiring information. This day of learning will include topics such as advocacy, spirituality, career, body image, parenting, and multiculturalism. Additionally, it will be a great way to connect and network with other professionals interested in GLBT issues.

Saturday April 3rd also will contain multiple AGLBI events beginning with the AGLBI Brunch from 10:30 to 12:00, a great way to connect with others and support the division. You may not have registered for the AGLBI Brunch. It is not too late to do so. Contact ACA by phone (800-347-6647) or via their website (www.counseling.org).

The AGLBI Business Meeting is at noon, which is immediately after the brunch. I invite and encourage you to attend. This time is used for reviewing and planning for AGLBI's future and for members to have direct input on the ways in which they would like to see AGLBI grow, improve membership services, and serve the GLBT community.

Also, please contribute to AGLBI's mentoring efforts by becoming a mentor or enjoying mentorship as a graduate student. Joy Whitman will be facilitating the Graduate Student/Mentoring Meeting at 1:00 p.m.

Finally, our day will end with the AGLBI Reception, from 7:00 p.m. to 9:30 p.m., which is typically a very festive event. Please come and celebrate with us!

We also have planned some more relaxed social time to connect. The AGLBI "happy hours" provide an opportunity to talk on a more informal basis, visit with friends, and meet new people. Each of the two social

times (Thursday and Friday from 5:30-7:30) will be preceded by an informal gathering of those interested in learning how to form state chapters (Thursday at 5:00 p.m.) and mentoring (Friday at 5:00 p.m.). Last year's socials were well attended and fun, and I hope as many of you as possible will come to the Brasserie Bar, lobby level of the Westin Hotel, to join us.

Furthermore, I continue to seek people interested in forming state chapters and a transgender interest network. If you are unable to attend the social functions, please contact me at ecconnolly@ixstate.edu to let me know of your interest in working toward these efforts.

Now I would like to again acknowledge Ned Farley's significant contribution to AGLBI in serving in the dual role as Past-president and President-elect of AGLBI. Part of the Past-president's duties involves nomination and awards; a piece of the President-elect's function is conference coordinator. Ned's services clearly extend so far beyond the norm that I feel it would be a disservice to attempt to name all he has done. His knowledge and experience have served AGLBI well!

Moreover, Ned also has been spearheading the efforts in securing a hard-copy journal for AGLBI through Haworth Press. The new journal is tentatively titled *Journal of GLBT Issues in Counseling* and will provide a substantial contribution to GLBT scholarship. This journal then will become an additional benefit to members. AGLBI is seeking editorial board members and soliciting manuscript submissions. Please contact Ned Farley regarding the journal at nfarley@aus.edu.

I also would like to provide an update on the website. Rhodes Gibson and Rob Mate have worked to implement the board's suggestions and enhance accessibility and resources for the AGLBI website. As you know the last two newsletters have been in electronic form only, which allowed monies to be re-routed to enhance the website.

We have been working on securing our "members only" section entered only through a password. I apologize for the delay in getting this section up and running. However, we have now worked out the

server/password kinks and have provided you with details on how to enter this area on a bright colored insert to this newsletter in an attempt to catch your attention quickly. We also have the information listed on page two (2) of this newsletter for your convenience.

This letter would not be complete without thanking Karen Hartman for her continued dedication to AGLBI and her production of a wonderful newsletter. She and co-editor Ed Wierzalis have worked diligently to enhance the newsletter and I ask you to send any information that might be useful additions to the newsletter their way.

Please contact me with any ideas, feedback, and/or offers to contribute time and energy to AGLBI. We seek nominations and self-nominations for officer and trustee positions in addition to people willing to help with membership, mentoring, and conference activities, to name just a few.

You might ask yourself: How can I be useful to AGLBI? There are many ways in which you can do so.

- Become an official liaison between AGLBI other divisions

- Attend the AGLBI business meeting to give us your ideas

- Add to the AGLBI Newsletter

- Contribute to *Counseling Today* on issues that impact the GLBT population

- Form a state chapter

- Join the AGLBI listserv

- Renew your membership

- Tell your friends the importance of the AGLBI mission and encourage them to join our efforts in creating a better, safer, equitable world for those who are GLBT, their friends, and their families

The AGLBI Board has focused energies on how to increase benefits to members, inspire new members to join, and invite those past-members of AGLBI to rejoin.

Continued on page 10...

Sunday, April 4th

7:00 - 8:30 am

Westin: Mission

My Family Is Special: Listening to the Voices of LGBT Families *90-Minutes*

Rebecca L. Farrell, James Mudd & Edward P. Cannon

Regardless of the route children take into this world, they do need one particular kind of family, a loving one. Love alone does not mitigate the complex issues facing LGBT families. The adverse impact of homophobia is what distinguishes these families from heterosexual families. *D# 421*

12:15 - 12:45 pm

Exhibit Hall, Booth: PS2

Feminist Identity and Ideologies as Correlates of Lesbian Internalized Homophobia

30-Minute Project/Research Poster Session

Dawn M. Szymanski

This research study examined how internalized homophobia is related to feminist identity development and adherence to various feminist ideologies in 227 lesbians and bisexual women. Results indicated that internalized homophobia was positively correlated with the Passive Acceptance stage and negatively correlated with the Embeddedness-Emanation, Synthesis and Active Commitment stages of feminist identity development. Internalized homophobia correlated negatively with radical, socialist, women of color, and lesbian feminisms, and correlated positively with conservatism. Multiple regression analysis indicated that feminist identity development and feminist ideologies accounted for 33% of the variance in internalized homophobia scores. Implications for practice and research are discussed. *ID# 470*

12:15 - 12:45 pm

Exhibit Hall, Booth: PS25

Gay Male Sex and the Internet:

The Bath House of the 21st Century*

30-Minute Project/Research Poster Session

Brian J. Dew

Results from a five month quantitative study (n=513) examining the relationship among internalized homophobia, sexual identity development, at-risk sexual practices, drug use, and sexual compulsivity among adult gay males who use the Internet for sexual purposes will be discussed. Counseling implications for working with sexually compulsive gay men will be explored with specific treatment options provided. *ID# 488*

1:15 - 1:45 pm

Exhibit Hall, Booth: PS27

PRESIDENTIAL THEME SESSION

GLBTQ Partner Violence:

Designing a Response

30-Minute Project/Research Poster Session

Dana B. Couch-Davis

Partner violence in the GLBTQ community is an unspoken known. With the cooperation of the Washington, DC GLLU Task Force, a program for addressing these needs has been established. This presentation looks at the development of this program. *ID# 516*



4:30 - 5:30 pm

Westin: Shawnee

When Mary Met Sally: Life Lessons of Lesbian Latebloomers

60-Minutes

Valeria Fajb & Barbara Abernathy

The phenomenon of lesbian "latebloomers" (women coming out in later life) is well documented. Navigating new relationships while dealing with new sexual identity issues can result in confusion and create a need for support. Since most of the women were married at the time of their coming out, this introduces another complex dynamic which counselors need to be aware of. Counselors need to develop skills to help these women and their partners address their identity and relationship issues, their need for community, and most importantly their need for congruence in their lives. *ID# 577*

4:30 - 5:30 pm

Westin: Roanoke

PRESIDENTIAL THEME SESSION

The Transgender Client—Education and Treatment Issues *60-Minutes*

Denise Pickering & Kerry E. Sebera

Transgendered persons are becoming more visible in our world. Currently, transgendered individuals are often categorized with gay, lesbian, and bisexual (GLB) persons. However, there are issues specific to this population, e.g. isolation, support, and medical concerns. This presentation will explore basic terms, potential implications for children, adults, and families and ways that counselors, school counselors, and counselor educators can assist and support the transgender person. *ID# 576*

Friday, April 2nd

8:00-9:30 am

Hyatt Regency: Chouteau A

AGLBC Day of Learning

Working with GLBT Clients:

Advocacy in Action *90 minutes*

Colleen Connolly, Colleen Logan, Melanie Harper, Bob Barret & Susan Seem

Client advocacy remains an important component of the professional counselor's work. Experts in the field will highlight several important areas of GLBT advocacy. The program first will focus on both sides of the GLBT age spectrum—youth and the older population – and will provide ways to advocate for their needs. In addition, the program addresses distinct and current areas of advocacy for GLBT parents and families, an important consideration as GLBT families grow in visibility and numbers. Finally, the importance of advocacy by friends, families, and allies of the GLBT population will be covered. *ID# SE1-A* **AGLBC created**

9:30-10:30 am

Hyatt Regency: Chouteau A

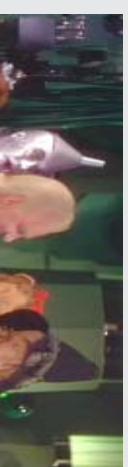
AGLBC Day of Learning

Gay and Lesbian Individuals & Communities of Faith: Finding Reconciliation

60-Minutes

Edward A. Wierzalis

One's sexual orientation as gay or lesbian can create a rift between the individual and their respective communities of faith. How might one reconcile their sexual orientation with their spiritual beliefs? This research based presentation will address this topic and issues of finding reconciliation. Attendees will examine through case examples, literature, and current research experiences based on sexual orientation, reconciliation, and belonging to a community of faith as a gay and lesbian person. *ID# SE1-B* **AGLBC Sponsored**



11:00am-12:00noon Hyatt Regency: Chouteau A
Career Counseling and Advocacy for Lesbian, Gay, Bisexual, and Transgendered Persons *60-Minutes*

Y. Barry Chung

Participants will increase their awareness of the significance of social advocacy for the career development of lesbian, gay, bisexual, and transgendered persons, and will learn strategies for such advocacy that are based on theory, research, and practice. Contents of the presentation include a discussion of theory and research about the career development of sexual minorities, work discrimination, coping strategies, national advocacy efforts and programs, and advocacy strategies for counselors at the local, national, and global levels. *ID# SE1-D* **AGLBC Sponsored**

10:30-11:00am

Hyatt Regency: Chouteau A

AGLBC Day of Learning

Counseling as a Critique of Gender: On the Ethics and Practice of Counseling Transgendered Clients *30-Minutes*

Valerie L. Schwiebert & Susanne Goethals

This presentation is intended as an inquiry into the responsibilities of mental health professionals to those who identify or might be identifiable as "transgendered." Accordingly, it has two main objectives. The first is to describe the type of critical reflection necessary to deal with gender-variant clients in an ethical and effective manner. The second is to discuss a psychotherapeutic model that is likely to be effective in integrating such reflection into the clinical process, and to make counseling recommendations on that basis. The focus of the presentation is on participant involvement, self-reflection, and the provision of suggested counseling techniques to work effectively with transgendered individuals. *ID# SE1-C* **AGLBC Sponsored**

3:00 -3:30 pm

Hyatt Regency: Chouteau A

A Qualitative Exploration of the Empowerment Needs of Gay and Lesbian Parents

30-Minutes

Kathryn S. Newton, Pamela S. Lassiter & Brian J. Dew

Challenges, barriers, and needs are explored from the voices of a diverse group of gay and lesbian parents. Guidelines for practitioners, counselor educators, supervisors, and parenting group interventions are discussed. In response to the recent challenge from ACA, opportunities and strategies for social advocacy concerning this population will be explored. *ID# SE1-F* **AGLBC Sponsored**

We are bound together in our desire to see the world become a place in which our children can grow free and strong.

James Taylor,
"Shed a Little Light"

Don't forget to stop by the AGLBC Booth in the Exhibit Hall!

3:15-4:15pm Westin: Shawnee

PRESIDENTIAL THEME SESSION
The No Place for Hate Campaign: A Professional/Community Collaboration to Promote Diversity Appreciation and Combat Bigotry

60-Minutes

Mark S. Kiselica & Alan D. Goldberg
This presentation will begin with an account of several disturbing hate crimes that occurred in Bucks County, Pennsylvania, during the late 1990s. The first presenter will describe how a coalition of professional counselors and concerned citizens organized a series of educational forums to stop hate crimes in their community. The first presenter also will explain how these events were organized and the successes, difficulties, and dangers that are associated with the No Place for Hate Campaign. The second presenter will facilitate a discussion with the audience regarding the role of professional counselors as activists within professional/community partnerships. ID# 207

4:30-5:30pm

PRESIDENTIAL THEME SESSION
Addiction Treatment Experiences of GLB Clients: A Qualitative Study

60-Minutes

Connie R. Matthews, Peggy Lorah & Jaime Fenton

This presentation addresses the results of a qualitative study of the treatment experiences of gay, lesbian, and bisexual clients in treatment for addiction. Phenomenological analysis was done on the content of semi-structured interviews with gay, lesbian, and bisexual individuals in recovery from addiction for at least a year. The interviews addressed their experiences in treatment, particularly what they found helpful or unhelpful with respect to treatment providers' responses to their sexual orientation. The presentation will present the results of the study and offer recommendations for affirmative addiction treatment with gay, lesbian, and bisexual clients. ID# 216

Westin: Mission

4:30- 5:30pm

PRESIDENTIAL THEME SESSION
Lesbians at Midlife: The Contemporary Experience

60-Minutes

Suzanne Deeges-White

The midlife experience of women, and lesbians, in particular, has long been understudied. In this session, we will explore the contemporary experiences of lesbian women at midlife based on current research findings of a study that looked at the transitions, overall wellness, and life satisfaction of this population. These findings will be explored within the context of existing theories; and presented alongside will be parallel data from both heterosexual and bisexual midlife women. This session will provide a new view at what women experience during midlife and implications for practitioners and counselor educators will be provided. ID# 218

Westin: Pershing East

4:30-5:30 pm

Adaptation in Sexual Minority Identity Development

60-Minutes

Parrish L. Paul & Gina Frieden

This presentation discusses processes that lead to enhanced adaptation in sexual minority identity development. Results of a phenomenological study on adaptation and differentiation in gay men will be examined, along with information on existing theories of sexual minority identity development. Attendees will be asked to participate in case example discussions and consideration of counseling work with these populations. Participants will be led in exercises that attempt to demonstrate the experience of sexual minority identity in heterosexist society. The goal of these exercises is to encourage counselor empathy and refine skills in clinical work with sexual minority identity individuals. ID# 223

Westin: Shawnee

Happy Hour

5:00pm - 5:30pm

Mentoring Focus

Westin: Brasserie Bar

5:30pm - 7:30pm

AGLBC happy hour

Westin: Brasserie Bar

8:45-10:15 am

Current Trends in HIV Education and Prevention: Changes, Challenges, and the Importance of Self-Esteem

90-Minutes

Lynn R. Surrey

Accurate information and a broad knowledge base have been the focus of the first generation of HIV education and prevention. Outcomes regarding the effectiveness of education and prevention efforts to date have been marginal. The next generation of HIV education will focus on the importance of applying behavioral change theories to the education process. Self-esteem will have a primary role in making behavioral changes that will reduce the risk of HIV transmission. Effective techniques for the application of these strategies will be presented. ID# 270

Westin: Pershing South

10:30am - 12:00noon

AGLBC Brunch

PRESIDENTIAL THEME SESSION
Meeting Clients Where They Are: Culturally-Competent Counseling for People Living with HIV/AIDS

Anneliese Singh, Michael P. Chaney & Dantica G. Hays
This program leads attendees through each stage of the HIV counseling process. Needs of people living with HIV/AIDS (PLWHA) in each phase are presented, including strategies to counsel individuals from diverse cultures. Topics addressed include adjustment to initial diagnosis, HIV and wellness, dual-diagnosis, advanced stages of AIDS, preparing for death, bereavement, ethical concerns, career counseling, and client advocacy. Participants learn HIV/AIDS counseling competencies, and understand the impact of HIV/AIDS on various cultural groups. Counselor educators acquire strategies to include this information into counselor education programs. Participants learn how advocacy is a core component of treatment for PLWHA. ID# 277

Westin: Empire A

1:00pm - 2:00pm

AGLBC

Graduate Student Mtg

2:00-3:00 pm

Lesbians with Physical Disabilities: Involving Families in Counseling and Rehabilitation

60-Minutes

Amy S. Milson, Connie R. Matthews & Brandon Hunt

This presentation will address the experiences of lesbians with physical disabilities in counseling and rehabilitation settings, specifically the degree to which service providers acknowledge and include families. It will include presentation and include results of a qualitative research study, as well as recommendations for working effectively and affirmatively with lesbians with physical disabilities and the people they consider family. ID# 355

5:45 - 6:45 pm

Are You Gay Friendly?

60-Minutes

Richard E Tyler

This will be a fun, practical presentation that allows each attendee to evaluate their office or practice from the eyes of their gay clients. Visual aids, case examples, and interactive exercises will be utilized in a relaxed and informative format to promote understanding and awareness of the needs and hesitations of gay individuals seeking counseling. ID# 402

Westin: Mission

5:45 - 6:45 pm

PRESIDENTIAL THEME SESSION

Crossing Borders, Closing Gaps: Building Strategies to Better Serve African American and Latino Clients with HIV/AIDS

60-Minutes

Allison Franks & L. Shane Blasko

Qualitative and quantitative data will be presented to compare and contrast the mental health needs, levels of psychological distress, retention, and stigma of African Americans and Latinos with HIV/AIDS. Additionally, the impact of cultural factors on these populations will be discussed. Attendees will also benefit from the opportunity to collaborate with peers in discussing their challenges in working with these populations, as well as share strategies to address those challenges. ID# 409

Westin: Shawnee

7:00-9:30pm

AGLBC

Reception



Westin: Shawnee

Westin: Mission

Westin: Shawnee

Westin: Pershing South

Westin: Pershing South

Westin: Shawnee



counselor educators will be provided. ID# 218

“Toto, I don’t think we’re in Kansas anymore!”